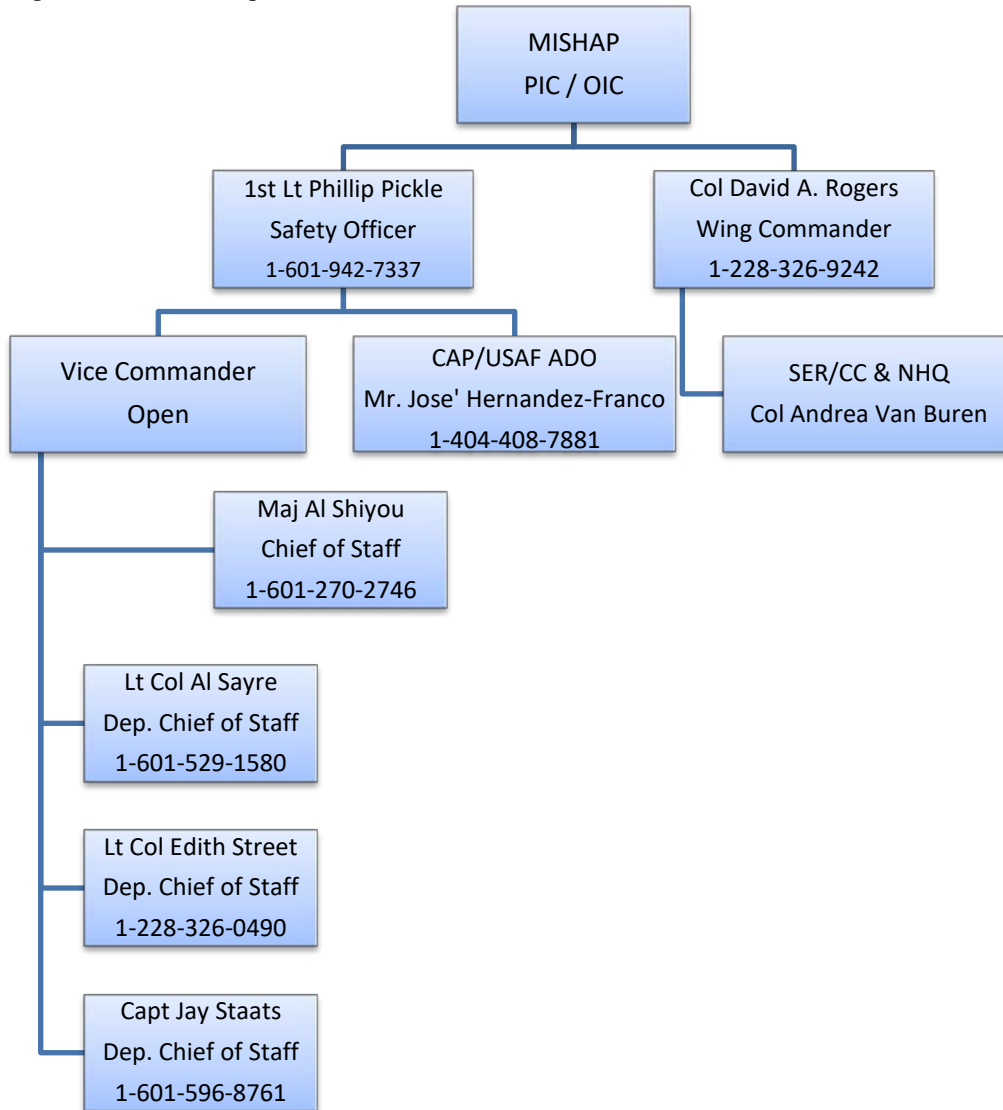




HEADQUARTERS MISSISSIPPI WING
CIVIL AIR PATROL
UNITED STATES AIR FORCE AUXILIARY
1635 Airport Dr.
Jackson MS 39209



Instructions: In accordance with the MSWG Mishap Reporting Policy, the following chart provides the contact names and telephone numbers for quick reference.



NOTE: THIS DOCUMENT IS SUBJECT TO CHANGE. CHECK THE MSWG WEBSITE FOR THE LATEST VERSION: mswg.cap.gov/documents-forms/

Revision: 1 Nov 2019